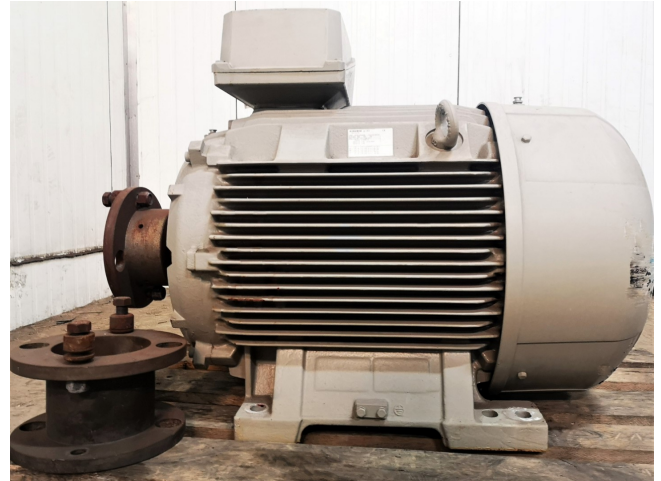


Siemens 3-MOT 1LE15012DC234AB4

Specifications

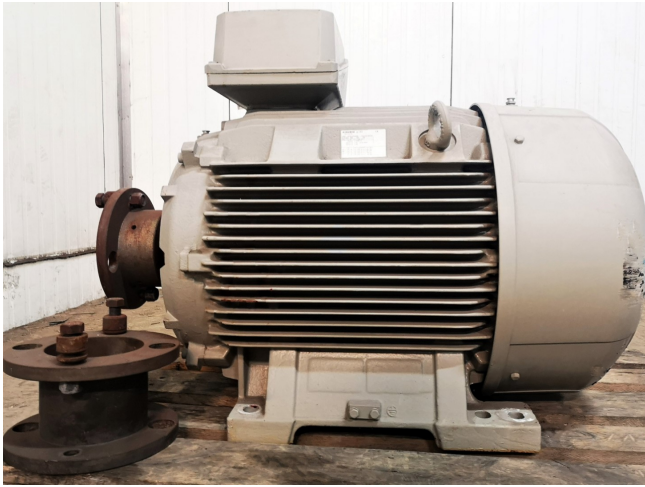
Merk	Siemens
Type	3-MOT 1LE15012DC234AB4
kW	55
RPM	985
Size & Weight	1050x550x710 mm (LxWxH)
50 Hz / 60 Hz	50 Hz // 60 Hz
Stock	1



Description

Used Siemens 3-MOT 1LE15012DC234AB4

Gebruikte Siemens 3-MOT 1LE15012DC234AB4 elektromotor met 55 kW en 985 RPM bij 50 Hz en 66 kW met 1185 RPM bij 60 Hz. Maten: 1050x550x710 mm (LxBxH).



SIEMENS		IE2		CE			
Made in Czech Rep.							
3-MOT 1LE15012DC234AB4			UC 1310/129073001				
IEC/EN 60034 280M		IMB3		IP55			
500kg		Th.Cl. 155(F)		-20°C ≤ TAMB ≤ 40°C			
Bearing		UNIREX-N3					
DE 6317-C3		30g		Intervall: 8000h			
NE 6317-C3		30g					
V	Hz	A	kW	cosφ	NOM.EFF	1/min	IE-CL
400 Δ	50	99	55	0.86	93.1 %	985	IE2
690 Y	50	57	55	0.86	93.1 %	985	IE2
460 Δ	60	104	66	0.86	93.0 %	1185	IE1
460 Δ	60	87	55	0.85	93.6 %	1188	IE2